



THETA Newsletter

July 2017

THETA/BRU
OPEN HOUSE
Fall 2017

THETA Rounds:

Many thanks to our 2016-2017 past presenters:

Dr. Petros Pechlivanoglou
Dr. Lusine Abrahamyan
Dr. Valeria Rac
Dr. George Tomlinson
Dr. Hawre Jalal
Dr. Andrea Gershon
Dr. Carolina Alba
Dr. Deb Marshall
Dr. Claire de Oliveira
Dr. Peter Cram
Dr. Beate Sander
Dr. Fiona Clement
Dr. Fernando Alarid-Escudero
Dr. Susan Horon
Dr. Avram Denburg
Dr. Sumit Gupta
Dr. Heather Ross
Dr. Nick Bansback
Dr. Robin Lovelace
Dr. Ava John-Baptiste
Dr. Paul Grootendorst

Message from the Director



It seems slightly odd to be reflecting back on the year when the sun is shining, the thermometer is flirting with 30 degrees, and we are just on the threshold of summer. But maybe not, it's been year since we've published a "Theta Quarterly", and the academic year, at least, is coming to a close.

We are slowly as a group finding our way. As many of you know, THETA started with a commitment by the provincial government to provide core funding for an academic HTA unit at the University of Toronto. This was the model we started with and built on for nearly 10 years. Our goals have been to support public decision making, conduct high quality HTA-related methods as well as applied work, and train people to a very high standard in the conduct of HTA. We think we have achieved some measure of success in these goals, but the loss of our core grant two years ago occasioned some serious soul searching, and casting about for direction. As a purely academic HTA unit (maybe an oxymoron?), are our goals the same? Is our mandate the same? The answer is "probably not exactly" but also "possibly not that different". Certainly our academic and training goals remain the same, and are now at the heart of our mission.

Hope and change. It seems like a slogan from days past but is maybe apropos for our future. There has been a lot of change. The biggest change is our move. As most of you know, we are now at the Toronto General Hospital and really do have amazing space here. If you haven't visited, please do. (TGH 10 Eaton North) you are very welcome!

There are tendrils, shoots of hope too. We've gone from the "we're not dead yet" phase to, the "wow, the future actually looks pretty bright" phase. We've had amazing support from the Toronto General Research Institute. Mansoor Hussein, Brad Wouters, Alena Siarheyeva, and Tracy McGuire have supported us here in very tangible ways—thanks a lot!!!. We have two fully funded scientists who have just joined us, Beate Sander and Valeria Rac. Nicholas Mitsakakis and Lusine Abrahamyan are now Assistant Professors appointed at IHPME and are playing increasingly important roles in teaching and training. We've had quite a number of big-ish project grants over the last year. We've hosted a number of courses and had quite a lot of publications and conference presentations. And THETA rounds have been a continuing success, in no small part because of the work of Petros Pechlivanoglou and Valeria Rac, who have brought amazing people to visit with us over the past year.

Looking to the future, there are a few things on the near-term horizon. First, we will have a Grand Opening/10th Anniversary Celebration in September. I know, kind of a contradiction (opening AND anniversary??). but it's appropriate for where and who we are. We have done a fair bit together in the past 10 years, and we want to celebrate, as well as letting UHN folks, and members of the wider health and innovation community know that we are here. We will be doing some strategic planning in the fall to map out a plan for what's next. We're thinking about becoming an EDU-C (extradepartmental unit) at the University of Toronto. And we're hoping for deeper collaboration with IHPME, UHN, and our international friends and colleagues. There has been a lot of change, but we are pretty hopeful these days. We hope you can share the next part of our journey with us!

New TGHRI Scientists at THETA



Valeria E. Rac, MD, PhD is a Scientist with the Peter Munk Cardiac Centre (PMSS) and Ted Rogers Centre for Heart Research (TRCHR), Toronto General Hospital Research Institute (TGHRI) and Associate Program Director and Director, Clinical Research at THETA. She is also an Assistant Professor at the Institute of Health Policy, Management and Evaluation (IHPME), University of Toronto.

Dr Rac's research interests and expertise are in the area of the health services research and the HTA and it is focused on the design, implementation and evaluation of large clinical trials, mixed-methods studies, complex health system interventions and registries. Her program of research is in the area of the design, implementation and evaluation of the complex interventions in the HTA (technologies and services) and chronic disease management in the community (heart failure, COPD, chronic kidney disease, diabetes). More recently her research is also focused on the system

level effects of health technologies and how they impact healthcare delivery. Currently Dr Rac is collaborating with the different groups/programs such as TRCHC and PMCC, the Diabetes Action Canada (SPOR Network) and the CIHR Community-Based Primary Health Care (CBPHC) Program - Transformation of Indigenous Primary Healthcare Delivery (FORGE AHEAD).

Representing UHN with Dr. Barry Rubin, Dr Rac is a member of the Minimally Invasive Structural Heart (MISH) Working Group (collaboration of Ontario MOHLTFC, CorHealth Ontario (former CCN) and CAHO) established to review and recommend pan-provincial adoption of different MISH interventions. She is also a primary Canadian Cardiovascular Society (CCS) liaison with the Heart and Stroke Foundation of Canada (HSFC) on the Indigenous Heart Health.



Beate Sander, PhD, is a Scientist with the Toronto General Hospital Research Institute, and Director, Health Modeling & Health Economics and Population Health Economics Research (PHER) at THETA. She holds appointments as Assistant Professor at the Institute of Health Policy, Management and Evaluation (IHPME), University of Toronto, Adjunct Faculty at York University, Scientist at the Institute for Clinical Evaluative Sciences (ICES), and Scientist at Public Health Ontario (PHO).

Dr. Sander's areas of expertise include HTA, health economics, decision analysis, simulation, Infectious disease epidemiology, and health policy decision making. Beate's research focuses on economic evaluation. She is leading multidisciplinary teams evaluating Zika and West Nile virus mitigation strategies using simulation models, and is linking laboratory with health administrative data, enabling novel approaches to study the burden of infectious diseases, e.g. hepatitis,

C.difficile and *S.pneumoniae*.

Beate provides scientific advice to decision-makers and serves on advisory bodies, including the National Advisory Committee on Immunization (NACI). Beate served on the board of the Society of Medical Decision Making (SMDM) and is an editorial board member of the "Medical Decision Making" journal.

Dr. Sander is the Faculty Lead for the Health Technology Assessment (HTA) program at IHPME, and enjoys teaching a popular graduate course on clinical decision making and cost-effectiveness at IHPME.

Fundraising

THETA will be participating in the Scotiabank Toronto Waterfront Marathon/Half marathon/5K on **Sunday October 22, 2017**, part of the Toronto General and Western Hospital Foundation team. To support our team or to walk or run with us, please look out for more announcements on the THETA website.

For more information, please visit: <http://www.torontowaterfrontmarathon.com/>

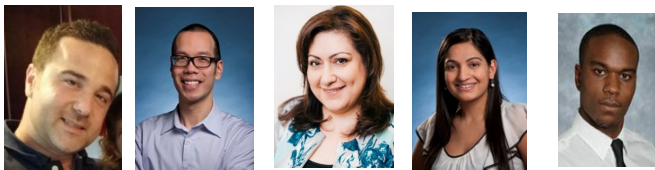
Grant awards:



- ◆ THETA Director Dr. Murray Krahn and a THETA Investigator Dr. William Wong were awarded a CIHR Project Grant *"Understanding the treatment benefits of novel antiviral agents for hepatitis C: quality of life, health utility, cost, and return to work"* (HCV-NOVAA Utility Study)
- ◆ Dr. William Wong and Dr. Murray Krahn also won a Canadian Liver Foundation (CLF) grant for a project: *"Using economic modeling to estimate hepatitis C provincial and national drug plan expenditures in the next decade."*
- ◆ A number of THETA faculty will be working on the Prostate Cancer Canada Project Grant *"Non-Metastatic Castrate Resistant Prostate Cancer: Epidemiology, Clinical Pathways, and Health Care Costs"*. Co-PIs: Dr. Murray Krahn and Dr. Antonio Finelli; with Co-Investigators: Dr. Val Rac, Dr. Lusine Abrahamyan, Dr. Nicholas Mitsakakis, and Dr. William Wong, Dr. Alice Dragomir, Dr. Armen Aprikian, Dr. Stuart Peacock
- ◆ Dr. Beate Sander received the Canadian Institutes of Health Research (CIHR) team grant: *"Assessing ZIKV transmission dynamics and mitigation strategies. A multidisciplinary approach."*
- ◆ Dr. Beate Sander also received the Canadian Institute of Health Research (CIHR), Project Scheme Grant: *"Addressing the health and economic burden of Lyme disease."*

Graduate Students

Congratulations to several graduate students supervised by THETA faculty that have defended their thesis and obtained graduate degrees this year:



- Nader Kabboul, MSc, PhD (Sept 2016), Supervisor: Murray Krahn
- Brian Chan, MSc, PhD (Jan 2017), Supervisors: Murray Krahn, Nicole Mittman
- Yelena Petrosyan, MD, MPH, PhD (Jan 2017), Supervisor: Walter Wodchis
- Natasha Nanwa, MSc, PhD (Apr 2016), Supervisors: Murray Krahn, Beate Sander, Jeff Kwong
- Troy Francis, MSc (Sept 2016), Supervisors: Valeria Rac, Murray Krahn

THETA Collaborative was created 10 years ago. THETA has gone through both good times and bad times. We have experienced many obstacles along the way but our team continues to stand strong. Thanks to all the current and past staff who have made THETA possible and make THETA part of their family!!!

Students Awards

- Graduate Research in Progress (GRIP) award winner MSc student Yasmin Saeed (supervisor: Dr. Murray Krahn), presented poster titled: *"Health Utilities (Quality of Life) in Chronic Hepatitis C Patients"* at the GRIP symposium.
- SMDM's 2016 Lusted Student Prize was awarded to two of Dr. Beate Sander students: Ryan O'Reilly and Rohan D'Souza.
- Canadian Network on Hepatitis C (CanHepC) 2017 Doctoral Stipend were awarded to Andrew Mendlowitz (supervisors: Drs. Murray Krahn and Wanrudee Isaranuwachai), Yasmin Saeed (supervisors: Drs. Murray Krahn and William Wong.). 2016 Doctoral Stipend was awarded to Aysegul Erman (supervisor: Dr. Murray Krahn)
- Irene Kyomugisha was awarded Best MSc Presentation Award at the Southern Africa Mathematical Sciences Association (SAMSA) Conference, Pretoria, South Africa (co-supervisor: Beate Sander)
- Dr. Beate Sander's PhD student, Rohan D'Souza, received the Women's Health Research Foundation Award in 2016.
- 2016 CIHR National Student Research Poster Competition was awarded to Dr. Beate Sander's student: Rohan D'Souza.



**THETA/BRU OPEN HOUSE AND THETA 10TH YEAR
ANNIVERSARY WILL BE HELD IN THE FALL.
EVERYONE IS WELCOME!!!**

Courses

Our **HTA Institute 3-day course** held in September 2016 at Hart House, University of Toronto was well received and we got great feedback from the audience. Many thanks to all the people that was involved to make this happened. THANK YOU!!!

<http://theta.utoronto.ca/HTAworkshop>



THETA also offered the **Introduction to R course** in February 2017 led by George Tomlinson, Petros Pechlivanoglou, Nicholas Mitsakakis, and John Matelski. The registration for this course was overflowed and the BRU team offered it again in June.

https://thebru.ca/intro_to_R_Feb2017



Dr. Murray Krahn's PhD student Mary-Ellen Hogan travelled to Ethiopia to teach a condensed two weeks course in Pharmacoeconomics at Addis Ababa University in 2016

Dr. Murray Krahn travelled to Ethiopia in March 2017 to teach a two week condensed course on **Pharmacoeconomics at Addis Ababa University**. The course was well received and THETA is exploring new opportunities to support the graduate education and professional development at the University of Addis Ababa.



Toronto Addis Ababa Academic Collaboration (TAAAC)

TAAAC – was created in 2008 as a unique, multidisciplinary educational initiative partnering University of Toronto (UofT) with Addis Ababa University (AAU) in Ethiopia.

The best and the brightest academic faculty from UofT volunteer to teach and co-build with Ethiopian colleague's essential residency, fellowship, Masters and PhD programs on the ground in Ethiopia. The volunteer teach courses, supervise PhDs, provide clinical supervision and teach technical skills.

<http://taaac.com/>

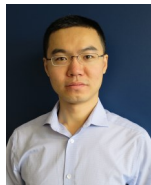
New Staff



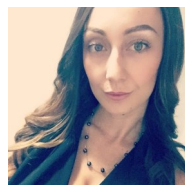
Dr. Beate Sander



Dr. Valeria Rac



Jin Ma



Aleksandra Lekic



Sonia Meera



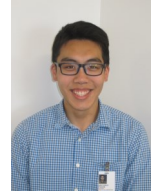
Troy Francis



Alex Haines



Lauren Ramsay



Arcturus Phoon



Estee Goldberg



Sarah Stewart

Full profile details can be found on our website
[http://theta.utoronto.ca/Staff_Inv
 estigators_Collaborators_Students](http://theta.utoronto.ca/Staff_Investigators_Collaborators_Students)

Welcome onboard Drs. Beate Sander and Valeria Rac as TGHRI Scientists!!!

Welcome Jin Ma, Biostatistician, who joined the Biostatistics Research Unit (BRU) in February 2017.

Aleksandra Lekic and Sonia Meera, Research Associates join Dr. Valeria Rac's team in January 2017 working on the THRIVE study.

Troy Francis joined Dr. Valeria Rac's team as Research Associate in June 2017.

Alex Haines, Health Economist, joined THETA from the UK in June 2017. Welcome Alex!

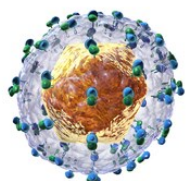
Welcome Lauren Ramsay, Research Coordinator for PHER Group with Dr. Beate Sander. She started in June 2017.

Welcome Arcturus Phoon, an undergrad student working part-time on the HCV project since July 2016.

Welcome our summer students—Estee Goldberg (May-Aug, 2017) and Sarah Stewart (June—Aug) helping out with the BUSS study.

THETA Project Updates

Using economic modeling to estimate hepatitis C provincial and national drug plan expenditures in the next decade (EM-HC study)



Hepatitis C Virus (HCV)

Research Team: Murray Krahn, William Wong, Valeria Rac, Abdullah Hamadeh, Alex Haines, Josephine Wong.

This is a five-step modeling project to estimate the prevalence, the number of untreated individuals, and to determine the clinical-effectiveness, cost-effectiveness, and affordability of different hepatitis C virus (HCV) treatment prioritization strategies for all Canadian provinces, using data from cancer registries, administrative health care databases, expert committee discussions and literature reviews. The study will use a state-transition model to estimate prevalence, and an individual-level state transition model for cost-effectiveness analysis (CEA) of different screening and treatment prioritization strategies. For each strategy explored, the study will perform comprehensive budget impact analysis (BIA) for each province.

We have a new team member, Alex Haines, a health economist from UK. He will be bringing his expertise in health economics to the study. He has already started the process of forming the expert panel and organizing the focus group meeting. He will also be working on the retrospective cohort study using administrative data. Our modeller, Dr. Abdullah Hamadeh has set up the back-calculation model and is in the process of calibrating it. He will be presenting his work in the upcoming Annual Meeting of the Society for Medical Decision Making.

Ontario Stroke Unit Study



Research Team:
 Murray Krahn,
 Mark Bayley,
 Moira Kapral,
 Valeria Rac, Lu-

ciano Ieraci, Gabrielle van der Velde, Ruth Hall, Linda Kelloway, Iris Fan, Yeva Sahakyan

Two study components have been completed, the (1) identifying stroke unit characteristics by administering the Ontario Stroke Unit survey to all Ontario SUs; (2) the cost-effectiveness analysis of stroke units vs. general wards. Manuscript on survey results entitled "The characteristics of stroke units in Ontario: a pan-provincial survey" has been published in BMC Health Services Research (2017) 17:154

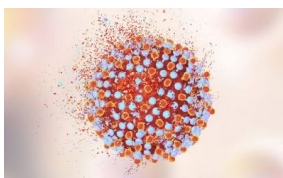
THETA Project Updates Cont'd

Understanding the treatment benefits of novel antiviral agents for hepatitis C: quality of life, health utility, cost, and return to work (HCV-NOVAA Utility Study)

Research Team: Murray Krahn, William Wong, Julie Bruneau, Jordan Feld, Samuel Lee, Jeff Powis, Lusine Abrahamyan, Karen Bremner, Zeny Feng, Karen Lee, Nicholas Mitsakakis, Petros Pechlivanoglou, Valeria Rac, Beate Sander, Bryna Warshawsky, Kate Mason, Arcturus Phoon, Yasmin Saeed, Josephine Wong.

This is a three-year, pan-Canadian, multi-centre (Calgary, Montreal, and Toronto), two-component study using self-reported questionnaires. Component 1 is a longitudinal prospective study to evaluate the change in health-related quality of life (HRQL) and utilities in chronic hepatitis C (CHC) patients treated with the new direct-acting antiviral agents. Component 2 is a cross-sectional study to assess HRQL and utilities in CHC patients with late stage disease (hepatocellular carcinoma, compensated cirrhosis and decompensated cirrhosis).

The protocol has received ethics approval from the ethics boards of the University of Waterloo, the University Health Network, the University of Toronto and the University of Calgary. We have started recruitment at the University Health Network since April 2017 and at the Liver Unit of the University of Calgary since May 2017.



HCV UTILITY PILOT STUDY: MEASURES OF QUALITY OF LIFE AND UTILITY AMONG PATIENTS WITH CHRONIC HEPATITIS C VIRUS INFECTION

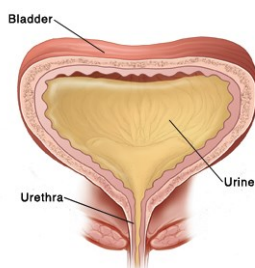
Research Team: William Wong, Murray Krahn, Karen Bremner, Julie Bruneau, Jordan Feld, Zeny Feng, Samuel Lee, Kate Mason, Nicholas Mitsakakis, Robert Myers, Petros Pechlivanoglou, Jeff Pois, Valeria Rac, Josephine Wong, Yasmin Saeed.

This is a multi-centre cross-sectional study, employing 7 self-reported questionnaires. We have completed the pilot study in March 2017. Two hundred and eighty-five participants were recruited. Our preliminary findings have been presented at the 37th and the 38th Annual Meeting of the Society for Medical Decision Making and the 5th Canadian Symposium on Hepatitis C Virus. We are preparing the manuscript for publication.

DEVELOPMENT OF A UTILITY WEIGHTING FUNCTION FOR THE BLADDER UTILITY SYMPTOM SCALE (BUSS-U)

Research Team: Murray Krahn, Girish Kulkarni, Nathan Perlis, Shabbir Alibhai, George Tomlinson, Antonio Finelli, Srikala Sridhar, Peter Chung, Joseph Chin, Robert Nam, Kirstin Boehme, Karen Bremner, Estee Goldberg, Sarah Stewart

Study recruitment and data collection for both patient and community member participants is ongoing at all study sites.



Developing and validating the BUSS (Bladder Utility Symptom Scale) - a disease specific utility instrument for bladder cancer health-related quality of life

Research Team: Murray Krahn, Girish Kulkarni, Nathan Perlis, Shabbir Alibhai, Munir Jamal, Antonio Finelli, George Tomlinson, Paul Ritvo, Kirstin Boehme, Karen Bremner, Rushi Gandhi

The study is now complete. One hundred and twelve bladder cancer patients kindly participated in our assessment of the validity and reliability of our newly created Bladder Utility Symptom Scale-Psychometric (BUSS-P). Results were presented at the Annual European Association of Urology meeting (Mar 2016 – Munich, Germany), the American Association of Urology meeting (May 2016 – San Diego, CA, USA), the Canadian Urological Association meeting (June 2016, Vancouver, BC, Canada), and the Society for Medical

CADTH ELSI+HTA



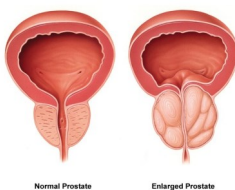
Research Team: Murray Krahn, Claire de Oliveira, Fiona Clement, Andrea Tricco, Patricia O'Campo, Nandini Dendukuri, Nisha Almeida, Diane Lorenzetti, Petros Pechlivanoglou.

A scoping review done in March 2016, including Ovid MEDLINE and Embase, was updated in April 2017 to include PubMed and additional “quality of life” terms. From the review, we extracted approximately 80 concepts related to Ethical, Legal, Social, and “Patient +” (ELSI+) issues, which we consolidated into 50 items. On May 23, 2017, we held a video-conference brainstorming session with six invited Canadian experts in HTA, ethics, law, or patient advocacy, and derived several more ideas. We will hold a similar focus group with volunteer patients and visitors recruited from Toronto General Hospital. The next tasks will be sorting and rating the concepts and developing the concept maps to portray the ELSI+ terms and their relationships.

THETA Project Updates Cont'd

Non-Metastatic Castrate Resistant Prostate Cancer: Epidemiology, Clinical Pathways, and Health Care Costs

Research Team: Krahn M, Finelli A, Rac V, Abrahamyan L, Dragomir A, Mitsakakis N, Wong W, Aprikian A, Peacock S, Bremner K, Carcone S, Masucci L.



In Canada, prostate cancer (PC) is the most common cancer diagnosed in men. In late stage disease, PC no longer responds to hormonal therapy and becomes castration resistant; either with clinically evident metastases (M-CRPC) or without clinically evident metastases (NM-CRPC). Currently, several new treatments for NM-CRPC, including immunotherapies, antiandrogens, bone-targeted agents, and androgen-receptor targeted agents are being tested.

The aim of this study is to present comprehensive epidemiological data on patients with NM-CRPC, describe pathways leading to NM-CRPC, describe transition probabilities to more advanced PC health states and describe associated costs. This will be accomplished using information from provincial cancer registries, administrative healthcare databases, and patient medical records in PC clinics in Ontario and Quebec.

In April 2017, a report was submitted to Prostate Cancer Canada that described the epidemiology of PC in Ontario from 1992 to 2015, including disease incidence, prevalence and mortality. Review of patient medical records will be completed by mid-June, with linkage to ICES administrative data to follow. An algorithm is also being finalized that will allocate patients into different PC health states.

With these steps completed we then plan to: (i) identify pathways leading to and factors associated with developing NM-CRPC; (ii) estimate annual incidence and prevalence of NM-CRPC (iii) estimate stratified probability of developing NM-CRPC and transition probabilities that characterize the prognosis from NM-CRPC to metastasis and end-of-life; and (iv) estimate health care resource use and costs of PC recurrence from NM-CRPC to metastasis and death.

Evaluation of VDI (Value Demonstrating Initiative) on COPD (Chronic Obstructive Pulmonary Disease): A Mixed Methods Study

Research Team: Murray Krahn, Valeria Rac, Lusine Abrahamyan, Petros Pechlivanoglou, Nicholas Mitsakakis, Suzanne Chung

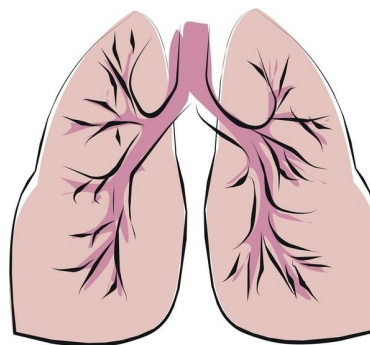
This is a mixed-method, multi-phase and multi-level evaluation framework aim to provide a comprehensive evaluation for the VDI on COPD program that includes an evaluation of project implementation, patient enrollment, patient & provider experiences of care, and program impact on clinical, economic and humanistic outcomes. The VDI on COPD program is an innovative approach for COPD patients providing them with an integrated, multidisciplinary care coordinated by a case manager. Multidisciplinary care consists of required care components and referred care components, based on a patient needs assessment. This is a collaborative effort between the Ontario Lung Association (OLA), the Ministry of Health and Long-Term Care (MOHLTC), and Canada's Research Based Pharmaceutical Companies (Rx&D).

Patient Care Pathway has been developed by a group of experts weighing in on best evidence based care OHTAC endorsed such as the use of pneumococcal and influenza vaccines, smoking cessation, and ongoing access to pulmonary rehabilitation for community-based management of COPD.

Currently we have Englehart, Great Northern, Kirkland Lake and Temagami Family Health Team; Earlton, Kirkland Lake, Larder Lake, New Liskeard and Virginia Town Centre de Sante; New Liskeard & Kirkland Lake CMHA; Wise Elephant Family Health Team, Brampton and Toronto Western Family Health Team participating in the program.

We have completed an interim report evaluating the effectiveness of patient identification process, screening and enrollment; feasibility of VDI implementation into routine practice and effectiveness of patient care coordination and patient and healthcare provider experiences with VDI on COPD program.

We are currently enrolling and planning on more patient and healthcare provider interviews.



THETA Project Updates Cont'd

TeleHomecare Intervention Evaluation: THRIVE Study



Research Team: Valeria Rac, Murray Krahn, Heather Ross, Michael Hillmer, Lusine Abrahamyan, Morgan Slater, William Wong, Petros Pechlivanoglou, Nicholas Mitsakakis, Nida Shahid, Aleksandra Stanimirovic, Sonia Meerai, Aleksandra Lekic, Welson Ryan, Yeva Sahakyan

The THRIVE Study is the second phase to a province-wide evaluation of the Ontario Telemedicine Network (OTN) Telehomecare. Using mixed-methods design to evaluate the overall impact of the Telehomecare program on patient and system level outcomes using a comparison group of chronic disease patients who did not participate in the program. Spanning across eight Local Health Integration Networks (LHINs) across Ontario, THRIVE Study aims to answer the question of

how different models of self-management enabled by Telehomecare can impact not only patient outcomes, patient and provider experiences and satisfaction but also health services utilization including integration and sustainability of the program, patterns of program use and system costs.

The team has secured ethics approval for 38 sites (hospitals, family health teams, community care access centres, and community health centres) and met with CCAC teams in Toronto Central, South West, Central West and North West LHINs to introduce the THRIVE study.

Since study launch in June 2016, we have enrolled 160 participants (patients, informal caregivers, providers, administrators, decision-makers and technicians). Ethnographic fieldwork (25 hours), interviews (40 participants) and surveys (121 participants) are well-under way across the different LHINs. The study team continues to collect data and is currently preparing to begin preliminary analysis of qualitative findings and data related to program use.

It's summer and the memories are just waiting to happen.

Have a great one, see you at the Grand Opening in early October!!!

More information, visit us at:

www.theta.utoronto.ca

Follow us on Twitter.

Tweets by [@thetacollab](https://twitter.com/thetacollab)

Share on Linked in.

inShare [Linked in profile](#)